

Furman University Review of Physical Resources

Narrative

Furman University has adequate physical resources to support its mission and the scope of its programs and services.

Mission Statement. Furman University challenges and supports lifelong learners through rigorous inquiry, transformative experiences, and deep reflection to lead lives of meaning and consequence.

As a liberal arts institution that primarily focuses on undergraduate education, the physical resources of the campus must be such that they can support the key activities of the educational experience: ‘challenge’, ‘support’, ‘inquiry’, ‘transform’, and ‘reflect’. Furman also offers graduate programs in Education, Chemistry, Strategic Design, Advocacy and Equity Studies, and Community Engaged Medicine, as part of this mission to provide lifelong learning. Both undergraduate and graduate education nurtures “the growth of each individual as a whole person: intellectually, spiritually, emotionally, and physically” ([Furman University Values Statement](#))

In 2016, the university adopted a strategic vision called [The Furman Advantage](#). The vision statement is:

The Furman Advantage guarantees every student an unparalleled education that combines classroom learning with real-world experiences and self-discovery. This integrated four-year pathway prepares students for lives of purpose and accelerated career and community impact—demonstrating in concrete terms the value of a Furman education.

The following narrative and supporting documents will demonstrate that Furman has the adequate physical resources to support its mission and vision and engages in periodic evaluation of said resources to ensure alignment with the institution's strategic plan and vision.

Overview

An aerial view of campus as provided by this [drone video \(external website\)](#) is a good way to get a feel for the campus. A [campus map](#) is also provided to illustrate the layout of campus. The Furman campus is situated on 941 acres with 378 of those acres maintained to support the mission of the University. The remaining land provides outdoor space for

the campus community to enjoy and opportunities for possible development in the future. The land was purchased in the 1950s when Furman Trustees decided to move the campus from downtown Greenville to its current location approximately eight miles north of the city. The campus has been carefully developed over the years by following the original Campus Master Plan developed in the 1950s and updating the plan over time to ensure that it is always aligned with the strategic priorities of the University.

The master planning process is a collaborative effort that involves all the stakeholders of the University. Updates are typically completed following the development of strategic plans and usually occur every 10 to 15 years. It is extremely important that the campus facilities fully support the mission of the university and are aligned with the strategic plan and vision for the university. The master planning process is specifically designed to ensure that alignment exists, and Furman has successfully used this process over a period of many years. Oversight of both the Master Plan and the campus facilities are provided by the Grounds and Building Subcommittee of the Board of Trustees. Grounds and Buildings meetings ([recent minutes here](#)) are held three times per year and input/approvals are provided for all major construction projects.

Updates to the master plan were completed in 1997 and 2001 with assistance from the architectural firm of Dober, Lidsky, and Craig. These updates focused on facility improvements that were required to transition from a two-year to a four-year on-campus residency requirement. In addition, the plan focused on updating the academic facilities to meet the needs of the faculty and the modern teaching techniques used today. This update led to a number of projects including the construction of the North Village Residence Halls (1998 to 2002), Hipp Hall (2001), Duke Library Addition/Renovation (2004 to 2005), Furman Hall Renovation (2006), and Townes Science Center Addition/Renovation (2007 to 2008).

An update to the Master Plan was completed in 2010 by the firm of Hanbury, Evans, Wright, Vlattas + Company. This plan focused on Student Life facilities, including the traditional residence halls, fitness center, and student activities building. Improvements to these facilities were strategically important to ensure that Furman was providing the desired experiences outside of the classroom. The 2010 Master Plan update led to the renovation of the Trone Student Center (2013) and the three-year, \$30 million phased renovation of Clark Murphy Residential Complex (2015 to 2017).

The [latest Master Plan completed in 2019](#) was focused on the South Housing Residential Complex. This planning process provided the foundation for the completed design of the New Residence Hall in South Housing (currently under construction); the renovation plans for the remaining 4 South Housing Residence Halls (to be renovated in 2024 and 2025) and the eventual demolition of Blackwell Hall (2025). The renovations will not only completely replace and modernize the building systems but living spaces will also improved for students by opening up areas that provide more natural light and by providing dedicated space for students to gather and socialize on each floor.

To inform and guide decisions during the implementation of [The Furman Advantage](#), Furman University engaged an independent third party planning firm, TSW Associates based in Atlanta, Georgia, to complete a [comprehensive space study](#). The study was focused primarily on the academic and student life buildings, but all space was inventoried and set up in a database for ongoing analysis and use. The university's goal is to utilize all buildings as efficiently as possible and to develop a plan to repurpose inefficiently used space so that future needs can be met without adding square footage. The process included interviews with key stakeholders to gather input and will include comparisons of Furman space metrics with those of our peer schools.

Current Facilities

Furman's physical facilities consist of 68 major buildings that total more than 2.4 million square feet in size. Below is a breakdown of the campus buildings by division.

Division	Square Footage	# of Major Buildings
Academic	710,440	11
Administrative	153,647	7
Athletics	249,845	9
Auxiliaries	418,290	13
Residential Life	775,964	24
Student Life	157,573	4
Totals	2,465,759	68

Academic Buildings

As Furman's primary mission is to provide a distinctive undergraduate education encompassing humanities, fine arts, social sciences, mathematics and the natural sciences, and selected professional disciplines, the university needs adequate and appropriate teaching and lab space to carry out proper classroom instruction and experiential learning. Furman has eleven (11) major buildings falling under the academic division as shown in the chart below. Five (5) of the buildings have been certified through the Leadership in Environmental and Energy Efficient Design (LEED) program for sustainable design and construction. The chart provides evidence that Furman has adequate physical resources to support its undergraduate education program that encompasses humanities, fine arts, social sciences, mathematics, the natural sciences, and selected professional disciplines as well as its graduate programs.

Building	Year Built	Year of Last Addition or Renovation	Size (GSF)	LEED Rating	Primary Disciplines
Daniel Music Building	1975	1997	53,288		Fine Arts
Duke Library	1957	2003	137,863	Gold	Intellectual Development
Furman Hall	1966	2006	81,733	Certified	Humanities
Herring Center	2012		23,345		Continuing Education
Hipp Hall	2002		38,230	Gold	Education and Business
Johns Hall	1997	52,212	52,212		Social Sciences
Riley Hall	1994		44,922		Mathematics, Computer Science
Roe Art Building	1986		32,585		Fine Arts
Shi Center for Sustainability	2008		8,105	Gold	Natural Sciences
Theatre Playhouse	1970	2011	14,904		Fine Arts
Townes Science Center	1958	2008	205,406	Gold	Natural Sciences

Periodic updates to these buildings are made to ensure the technology and interior finishes are replaced at the end of their expected life cycle. Each classroom is outfitted with modern technology that enables the professors to teach using a variety of digital media platforms. Most classrooms have also been upfitted with modern camera systems that allow either the professor to teach remotely or the students to learn remotely when needed. In addition, our academic buildings have wireless throughout for use by students and faculty.

These buildings were designed to meet the specific program needs of the departments housed in each building. The following will provide examples of how space is designed to appropriately support the scope of the programs housed in a building.



Furman Hall

Furman Hall houses the Asian Studies, Classics, Communication Studies, English, History, Modern Languages and Literatures, Philosophy, and Religion Departments, which comprise the humanities aspect of Furman's liberal arts undergraduate experience. The facility contains multi-media classrooms, laboratories as well as the James B. Leavell Reading Room (used for welcome receptions, open houses, and other student events including studying and browsing the reading collection).

To support specific needs of the Communications Studies program, Furman Hall contains a cutting-edge Media Lab, which includes a fully functional broadcast studio, complete with integrated cameras and lights on a tricaster switching system. The Media Lab is the home of our television studio, in which students produce a regular newscast that airs on the campus cable network. Our students also routinely create sports reports, documentaries, PSAs, advertisements, and other forms of digital media. Students also have access to a broadcast studio, editing bays, camera equipment, podcast kits, and technology to capture those hard to reach shots like gimbals, iPhone mounting kits, and drones.

Specifically designed for the scope of the English program, a classroom with a conference table and 20 computers is available for courses that combine discussion with in-class writing and internet research. The Modern Language Center, serving Modern Languages and Literatures, offers weekly conversation groups, engaging activities like game nights, free drop-in tutoring, and a fully mediated space for interactive class sessions.



**Thomas Anderson
Roe Art Building**



**Homozel Mickel
Daniel Music Building**

Supporting the fine arts component of a liberal arts education at Furman University, the [Thomas Anderson Roe Art Building](#) contains 32,585 square feet of space designed specifically to accommodate the scope of the art program. The attached document demonstrates that the building provides space appropriate for areas of study within the art program at Furman, including a ceramics studio, a darkroom, a design studio, a digital photography lab, painting and sculpture studios, as well as an art gallery. Also supporting fine arts is [The Playhouse](#), a 14,904 square-foot facility that houses the Theatre Arts program. It too is designed to appropriately support the scope of the program and contains a 110-seat theatre for theatrical performances, a scene shop to construct scenery, a costume shop to create original designs, and a design lab with the latest software and operating system to create elaborate sets, lighting designs, and costumes. Finally, the [Homozel Mickel Daniel Music Building](#) and [Nan Trammell Herring Music Pavilion](#) support fine arts and the scope of the music program. Its 53,288 square feet contains a grand recital hall, rehearsal halls, teaching studios and classrooms as well as a music media center and library, all of which are typical to support the needs of a quality music program.



John E. Johns Hall

John E. Johns Hall supports the social sciences component of Furman's liberal arts education and houses the departments of Politics and International Affairs, Psychology and Sociology. The 52,212 square foot building is designed to encourage social interaction among students and faculty. Facilities include a computer lab, small seminar room, and a community research center with computers, as well as classrooms and a lounge for students to hang out together, all of which support both in-class and out-of-class experiences for our students. A specific example of supporting the scope of programs is the Baily Simulation Hall which offers a realistic touch to classes with its three-tiered, semi-circle design. The room's flexibility allows simulations of the Supreme Court, the United Nations, or the United States Senate in support of the scope of the Politics and International Affairs program.



Richard W. Riley Hall

The mathematics element of Furman's liberal arts undergraduate education is supported by the Richard W. Riley Hall facility which houses Furman's mathematics, economics, and computer science departments. In addition to classrooms, the 44,922 square foot building supports the math program with a Mathematics Resource Center where students can gather with tutors and mathematics majors for tips and guidance. Math students get social at the Pigeonhole, where computers, comfy couches, and a big-screen TV create a high-tech oasis where spacious work tables help students map out mathematical problems and make the Pigeonhole a productive social space. Lab space dedicated to supporting the economics program offers students access to numerous useful software programs including STATA software, an econometrics program and ArcGIS, a geographic systems software.

The Department of Computer Science features two classroom spaces which are continually upgraded to stay current with developing technology and pedagogy. The new [Jennifer McHan Good Collaboratorium](#) is a showcase classroom for the university. The Collab features an open floorplan for engaged learning and accessibility, multiple displays with casting and multimedia capability, conferencing technology, dynamic space configuration options, and natural lighting, all in service of supporting real-time collaboration among students and faculty. It is flexible enough to serve as a learning space for a small seminar class, or for special events with up to 32 participants.

Two computer labs, each equipped with state-of-the-art workstations augment classrooms in support of the Computer Science department's high level of classroom engagement, with meaningful projects and collaboration among student teams a significant priority. These labs are used for class instruction, special workshops, and courses in programming and a wide range of topical upper-level elective topics such as machine learning, game design, information security, and human/computer interaction. They too are designed to foster collaboration and effective teamwork. The department also has two rooms providing dedicated workspaces for up to 16 students who are doing research or other department-related projects.

Other physical resources supporting the scope of the Computer Science program include Makerbot and Tenlog TL-D3 Pro 3D printers, a Makerbot 3D Scanner, HP Designjet T530 Plotter, Tobii Pro Fushion Eye Tracking hardware and software, and 8 Raspberry Pi version 3 units available for student or faculty use. Students and faculty have access to a specialized data mining workstation with 2 CPUs, 6 monitors, and high-capacity RAID storage array. The department also provides a myriad of tools for software development and web development (Java, Python, Javascript, SQL, iOS, Android), data analysis (R, Weka), and content creation (Adobe Creative Suite, Unity).



Charles H. Townes Science Center

Furman's largest complex supports Furman's undergraduate liberal arts education in the natural sciences: The Charles H. Townes Science Center (TSC). Dedicated in 2008, this \$62.5 million, 205,406 square foot building features multimedia classrooms, research laboratories, computer labs, and study lounges to support students and faculty. The departments of Biology, Chemistry, Earth & Environmental Science, and Physics are housed in the TSC.

Physical resources supporting the scope of the biology program in addition to state-of-the-art equipment in the modern TSC facility include a large greenhouse adjacent to TSC, a molecular assays core facility with darkroom, an aquatic biology laboratory, controlled-environment laboratory with eight reach-in environment chambers, an herbarium with more than 20,000 catalogued plant specimens, a 1,354 square foot animal facility, separate and dedicated rooms for fluorescence microscopy and radiotope work, a walk-in cold room, areas for individual and group study and lab space for each faculty member. All of these physical resources are typical and necessary to support scholarly study and research in biology (a [listing of laboratory and field equipment](#) is included).

Supporting the scope of Furman's chemistry program and its commitment to undergraduate research as well as its Masters in Chemistry program, laboratories are appropriately equipped with modern technology and instrumentation. Our faculty introduce students to instrument technology in their courses, and then expand their instruction in their research laboratories. By working with our faculty, majors gain hands-on experience with equipment that they will use throughout their careers, such as two high-field, superconducting Nuclear Magnetic Resonance (NMR) spectrometers. In fact, our research laboratories contain more than \$5.6 million in assets. A [full listing of laboratory equipment and instrumentation](#) is included as reference to further substantiate the adequacy and appropriateness of physical resources in support of the chemistry program.

The impressive Charles H. Townes Science Center is L.E.E.D. gold certified and includes a number of sustainable features, including chilled beams that use cold water for cooling,

low-flow hoods throughout the building, and treated wastewater for flushing toilets, making it a perfect facility for Furman's Earth & Environmental Sciences (EES) department which has its own state-of-the art labs. Research laboratories are designed especially for the scope of the EES program and include watershed science, biogeochemistry, geographic information systems, geology, and hydrogeology. A [complete listing and description](#) of physical resources supporting EES is included here a further documentation of adequacy and appropriateness.

The [Physics program](#) is supported by instructional and research laboratories and a student workshop within the TSC, as well as the [Timmons Planetarium](#), a digital theater which projects the night sky and full-dome movies on a 24-foot diameter dome. Students have access to computing resources that provide important analytical and graphical programs; for example, Mathematica, Matlab, Python, and astronomical data processing software. Students are encouraged to use these and other resources in the classroom, as they are used to develop the necessary skills needed in today's careers and graduate programs. The Physics Department maintains an off-campus observatory, which houses a 14-inch optical telescope, a large observing pad for guests with telescopes, and a warm room.



Herman N. Hipp Hall

Home to the Business and Accounting and Education departments, [Hipp Hall](#) is a state-of-the-art facility and was the first LEED Gold- certified building in South Carolina. This 38,230 square foot facility features classrooms equipped with projection systems, computer labs, conference rooms, and student workrooms. The building supports the scope of Furman's professional disciplines in Education and Business and Accounting as well as its Masters program in Education.

A specific example of how this facility supports the scope of the Business and Accounting programs follows. Furman's innovative Business Core provides Business Administration majors with an MBA-level experience, emphasizing an integrated working knowledge of accounting, finance, and marketing. To support the scope of this program and to enhance and complement the student experience, the [Joe and Diana Hurley Finance and Business Analytics Lab](#) provides students hands-on, real-time training with "big data" in business analytics for a variety of applications—finance, marketing, health care, real estate, insurance, risk management, government, and supply chain management. Students not only have access to the data, but also they will learn how to interpret it in order to make thoughtful business decisions. The lab is a 600-square-foot space equipped with dual-screen Bloomberg terminals, a stock ticker (both inside and outside the lab), several flat panel displays flanking wood-paneled walls, and digital clocks showing times for major trading cities around the globe. In addition, the lab's video conferencing capabilities connect students with business executives and leaders all over the world. Students have the opportunity to seek advice about the data they are studying as well as have the chance to ask broader questions regarding current events and pressing issues in the business world. The lab is also utilized by the student-run Investment Club and for Volunteer Income Tax Assistance (VITA) training.



Herring Center for Continuing Education

Furman's mission includes supporting lifelong learning, and the Herring Center for Continuing Education provides adequate and appropriate physical resources to support the programs under the Continuing Education department. From providing at-risk teens with the tools to graduate high school to training business executives in corporate sustainability, the Division of Continuing Education provides members of our broad community the ability to pursue their personal and professional goals. We offer courses that will help students understand the world, improve their artistic capabilities or gain the skills needed to climb the corporate ladder. Designed to match Furman's architecture style, the two-story, 23,368 square foot facility serves more than 3,000 community members across Upstate South Carolina. The building includes offices, a large open

gathering area, seven classrooms, a teaching kitchen, three meeting rooms, and an outdoor terrace, all of which provide appropriate space for the courses and activities conducted by the Continuing Education program.



James B. Duke Library

Library and Other Learning Resources: Learning/information resources

The Furman University Libraries include three physical locations, which are:

- The **James B. Duke Library** (the main library) which also houses:
 - Special Collections Archives
 - Digital Collections Center
- The **Robert J. Maxwell Music Library**
- The **Sanders Science Library**

The three libraries are physically close on campus, with no more than a six minute walk from one to another, and they are compliant with the Americans with Disabilities Act (ADA). [Floor plans](#) are attached for all three locations.



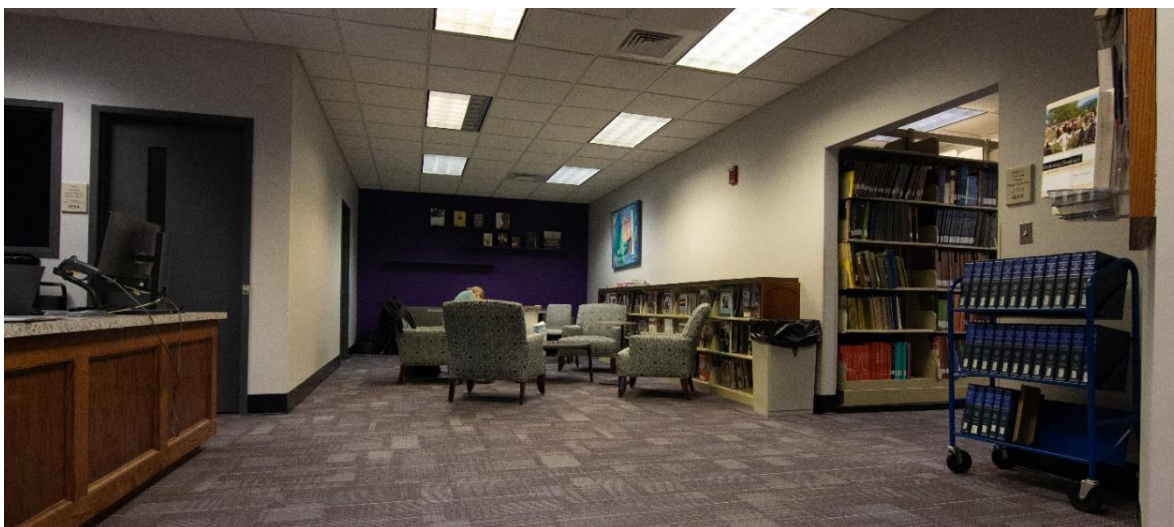
The James B. Duke Library

The James B. Duke Library was originally constructed with the new campus in 1956. In 2002-2004, it underwent a \$25 million renovation and expansion. It is now a LEED gold-certified 122,000 square foot building. The spacious facility provides areas for collaboration including 28 group study rooms, large and small tables, study carrels, modular furniture, areas for the use of technology, and space for individual study and reflection. There are a total of 845 seats available for student use. Two classrooms, designed for research instruction are also available. In the combination 24-hour study lounge/cafe, lockers, desktop PCs, and a multi-function printer are accessible. The Duke Library is staffed 99 hours per week.

Spaces and resources include:

- Shelving capacity for approximately 500,000 items
- Wi-Fi access throughout
- Charging stations for electronic devices
- Modular whiteboards and some modular furniture
- Multi-function printers that offer students the ability to print, make photocopies, and scan to e-mail. Students have a generous budget for free prints
- Research Commons, including 32 desktop PCs and 5 multi-function printers
- Multimedia Commons, including 36 desktop PCs and iMacs and 1 multi-function printer
- 4 classrooms, including a classroom that contains 14 student iMacs.
- 24-hour study lounge, including 4 desktop PCs and 1 multi-function printer
- Curriculum, juvenile, and young adult collection to serve Education majors and minors.
- Most desks have power outlets
- 1 media viewing room
- 1 recording / podcast studio
- 2 microform scanners/printers
- Special Collections reading room containing 1 desktop PC and 1 multi-function printer
- Exhibit and event space
- 2 elevators, and ADA accessible throughout
- Information Technology Service Center (Help Desk) is housed in the building
- Instructional Technology Services is housed in the building
- Center for Academic Success and Academic Assistance are housed in the building
- The Writing and Media Lab is housed in the building
- Faculty Development Center is housed in the building
- The Cothran Center for Vocational Reflection is housed in the building
- The Office of Pre-Professional Advising is housed in the building
- Blended Learning Studio containing a lightboard is housed in the building

The Furman Libraries collaborate with the Faculty Development Center, Center for Academic Success, and Instructional Technology Services.



The Maxwell Music Library

The Maxwell Music Library, which opened in 1998, and was renovated in 2023, is a 3,500 square foot facility located in the Daniel Music Building. It includes a music technology lab, seminar room, and library. The library provides books, periodicals, music CDs, DVDs, electronic resources, and headphones to patrons. The Maxwell Music Library is staffed 84 hours per week.

Spaces and resources include

- Shelving (including cabinets) for over 35,000 items
- Wi-Fi throughout
- 5 desktop PCs and 1 multi-function printer
- Recording technology and accessories for checkout
- Listening carrels (includes legacy playback equipment such as record player, DAT machine, and cassette decks)
- 15 music technology iMacs with MIDI keyboards
- High-density CD storage
- Compact shelving for books and scores



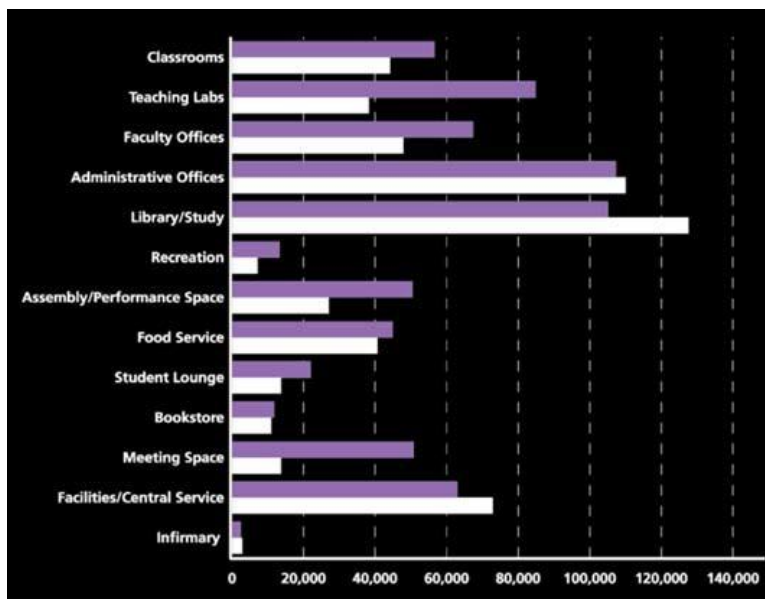
The Sanders Science Library

The Sanders Science Library, which opened in 2008, is a 4,600 square foot facility located in Plyler Hall in the Townes Center for Science includes a reading room and one group study room. The library provides books, periodicals, DVDs, and electronic resources to patrons. The Sanders Science Library is staffed 69.5 hours per week. Spaces and resources include:

- Shelving for approximately 30,000 items
- 5 desktop PC's and 1 multi-function printer
- Specialized software including ArcGIS, SPSS, and Mathematica.
- 6 modular whiteboards and some modular furniture /power outlets to facilitate study

Summary of Academic Space

Furman clearly has adequate space to support the academic mission of the university based on industry standards as shown in the space analysis and plan from TSW & Associates and in the chart below, provided by the third-party planning firm. Furman's square footage is shown in purple and compared to industry standards in white for various categories of space in higher education. (Space standards are based on a combination of numbers from the Council of Educational Facility Planners International, successful spaces at other colleges or universities, successful spaces on Furman's campus, and TSW's professional opinion.)



Based on this data, it is evident that sufficient academic space exists in Furman's classrooms and teaching labs to meet the academic needs of the university. Also supporting the assertion that Furman has sufficient academic space are the results from the space study regarding classroom utilization and occupancy. [Teaching space utilization](#) is addressed on page 14 of the study and indicates that even at the busiest point in the week, 22% of classrooms on campus remain vacant. [Classroom occupancy](#) is addressed on page 16 of the study and indicates that, on average, approximately 60% of seats are occupied.

The space study completed by TSW Associates also indicates that Furman has more than adequate research space to accommodate the scope of its programs. [Page 11 of the study](#) says "Furman may have more research lab space than conventional liberal arts colleges. This space is a key part of the University's mission and allows students to have the experience of conducting research and putting what they learn in the classroom into practice. It also provides space for faculty to advance knowledge in their fields. Townes Science Center contains 85% of the research space on campus." Additionally, [page 15 of the study](#) addresses lab utilization and indicates very low utilization. [Page 17 of the study](#) addresses lab occupancy and indicates that, on average, about 75% of seats are occupied. As confirmed by an independent third party, Furman has adequate and appropriate physical resources supporting the academic experience of the students at Furman.

Student Life and Residential Life

The Student Life division creates programs and activities that help students and student organizations connect within our residential community, putting them in a position to get the most out of their undergraduate experience. By supporting an environment where students can interact and exchange ideas, student life programs help educate the whole person and foster a sense of community.



Trone Student Center

The Trone Student Center is a comfortable place for our students to meet, eat, chat and hang out. The student center provides ample meeting space, a 110-inch video screen in the Hill Atrium, comfortable seating, a pub-style restaurant, spectacular views of Furman Lake, and other features that benefit our students. The 96,000-square foot building integrates academics and student life. Our student organizations—ranging in everything from student government to student media—are housed here. The center is also home to a number of important student resources, including the Malone Center for Career Engagement and the Rinker Center for Study Away and International Education.



Charles E. Daniel Chapel

Centrally located on campus across from the James B. Duke library, with its steeple backdropped against Paris Mountain, the Chapel has become a beautiful focal point on campus. Not only do we host worship services in the chapel, but our students also use the downstairs space for their own religious group meetings, and our community members reserve the sacred space for religious services like weddings and funerals. This 52,025 square foot facility serves the spiritual development aspect of Furman's mission to develop the whole person. It is an appropriate space for such development as it includes a 375-seat sanctuary for worship services and meeting space for student religious groups to convene.



Herman W. Lay Physical Activities Center

The Herman W. Lay Physical Activities Center (PAC) serves and supports the professional discipline, Health Sciences, as well as supports and encourages the physical development component of Furman's mission to develop the whole person. The PAC is the hub of healthy living at Furman. All of our wellness courses are taught in the PAC, which also has a swimming pool, cardio equipment, elliptical trainers, treadmills, stationary bikes, free weights, resistance machines, and a dance studio for spinning classes, yoga, and stretching. Furman's health and wellness facilities are superb for a liberal arts university of its size. While the PAC provides the latest exercise equipment, the Furman Institute of Running and Scientific Training (FIRST) and Molnar Human Performance Laboratory give our health sciences students an opportunity to conduct research to discover newer, better ways to make athletes more competitive. FIRST offers our Health Sciences students a chance to work in a nationally recognized laboratory that uses proven scientific principles and documented research to teach runners how to be faster, stronger, and safer at all distances. The Human Performance Lab can conduct the same kinds of metabolic testing and biomechanical analyses that is found at a major research institution and has collaborated with Greenville Health System and Clemson University.

Furman is a residential campus with a four-year residency requirement for students. This requirement is part of the out-of-class experiences strategically designed to develop the whole person included in the mission of the university and gives students a direct avenue for engaging deeply in the ideals of [The Furman Advantage](#) vision, connecting and applying their in-class and out-of-class experiences. The housing inventory has been intentionally built on a developmentally appropriate model that contains a variety of living scenarios for students as they progress during their time at Furman.



South Housing - Poteat

Most freshman are assigned to live in one of the five South Housing residence halls, which feature community style baths, double occupancy living spaces and common spaces which are key in assisting students to explore and meet peers and form bonds as they learn to transition and thrive personally and interpersonally. A [Housing Master Plan](#) was completed by Hanbury Evans Architects in 2019. The final plan called for the addition of a new 220-bed freshman residence hall, the gut renovation of four existing residence halls, and the demolition of Blackwell Hall (a first-year residence hall). The initial phase of that plan is the addition of a new residence hall which is currently under construction.



New Freshman Residence Hall under construction

A rendering of the completed residential complex for Freshman is shown below. The new and updated facilities for freshman will be transformative and provide the residential living experience that meets the needs of current students.



Rendering of completed South Housing Freshman Village

Most sophomores are assigned to one of the seven Lakeside Housing residence halls that were renovated between 2015 and 2017. The Lakeside student rooms are predominantly suite style, with two bedrooms (double occupancy) sharing a common bath. As mentioned above, a three-year, \$30 million major renovation to Lakeside was completed in September 2017. This renovation transformed how these buildings look and function and most importantly provided better space for student group engagement and experiential learning opportunities that align with the Furman Advantage vision. Classroom and multipurpose lounge and catering spaces were added for large and small group events, classes and gatherings of student organizations. Floor lounges were added throughout to build group cohesion. Developmentally, the Lakeside residential facilities provide strategic common space to extend our engaged living programs facilitated by faculty and staff and gives students both large and small space options for advising, tutoring, studying and socializing.



Clark Murphy Housing Complex - Judson Hall

As students grow in their independence and ability to live on their own, they migrate to apartments at North Village. The North Village apartments are in the core of the campus and are predominantly comprised of four bedrooms with two baths that share a common living and kitchen space. Juniors and a portion of the senior class live in North Village. The 11 buildings that make up North Village are being renovated in a phased 3-year plan along with the Pavilion that serves as the social hub for the complex.



North Village Building D – After Renovation



North Village Pavilion

Approximately 94% (2,397 students based on 2,550 total student enrollment) of Furman's undergraduates live on campus during fall and spring semesters (the other six percent are on study away, live with parents locally, or have been granted one of a limited number of exceptions). From the occupancy data listed below, it is evident that Furman has an adequate number of beds to accommodate the four-year residency requirement for an undergraduate population of 2,550. The narrative above describes how these housing facilities appropriately support the mission of the university.

Residence Halls	Occupancy	Style
South Housing	737	Pod Bath
Lakeside Housing	667	Suites
Bell Tower Housing	22	Houses
North Village	1024	Apartments
Totals	2,450	

Athletic Facilities

Another facet of Furman's mission to provide out-of-class experiences to develop the whole person is its athletics program. Furman has 16 NCAA Division I men's and women's athletic teams, and they utilize a number of buildings and playing fields for their practice and competition needs. [The Athletic Facilities table](#) shows the various athletic teams and that the facilities utilized are adequate and appropriate for the specific sport. Further evidence that each sport has adequate and appropriate facilities designed specifically for its use follows:

Men's and Women's Basketball	Timmons Arena	The 100,000 square-foot arena, which seats 3,500 people for basketball and 6,000 for concerts and other school and community activities, currently serves as the home of the university's men's and women's basketball programs and men's and women's lacrosse programs. In addition to featuring two regulation-size basketball courts, the facility includes offices, recently renovated locker room facilities, offices for sports information, a complete sports medicine facility, and a 7,000 square-foot strength and conditioning center that serves the university's entire 20-sport intercollegiate athletics program. Arena seating is chair-back style and is collapsible to allow the available floor space to be used for a variety of activities.
Men's and Women's Cross Country	Furman Golf Course	Furman holds two cross country meets each fall, the Gene Mullin Cross Country Invitational, which is named for the Paladins' former long-time head coach, and the Furman University Cross Country Classic, which began in 2013. Both races are run on the Furman University Golf Course and feature a spectator friendly 2k-looped course. The course at the Furman University Cross Country Classic is European style with logs and hay bales. The Furman course was the site of the 1997 and 2001 NCAA Division I Cross Country National Championships.
Football	Pearce-Horton Football Complex	The Pearce-Horton Football Complex, a 44,000-square foot, four-story facility, serves as the new operational home for Furman football and includes a locker room for 105 players, coaches' offices, meeting rooms, sports medicine center, and "Mauldin Hall" that highlights the program's championship history. The complex includes ShawSports "Thunderbolt" playing surface, which replaced the original natural grass field. Fan game day enhancements include the addition of padded chair back seating, improved lighting, and a new public address system.
Men's and Women's Golf	Furman Golf Course/REK Center for Intercollegiate Golf	Furman's beautiful 170-acre golf course is considered one of the finest college courses in the country. Measuring approximately 6,994 yards from the championship tees and 6,400 from the women's tees, the course features Champion Bermuda greens and Bermuda fairways and is fully irrigated. With Greenville's temperate climate, the Furman course is open for play year-round. The REK Center for Intercollegiate Golf serves as clubhouse and practice facility for Furman's men's and women's golf teams. In addition to coaches' offices, locker rooms and a meeting area, it features putting and chipping greens, as well as fairway and greenside bunkers.
Women's Lacrosse	Pearce-Horton Football Complex	The women's team utilizes a number of facilities across the campus for practices and games. Home games are played in the Pearce-Horton Football Complex and this field is also used for many of the practices throughout the year. In addition, there are 2 other multi-use natural turf fields that are used for practices. Women's Lacrosse has locker rooms in a fieldhouse located in the west end zone of the football stadium.
Men's and Women's Soccer	Stone Soccer Stadium/Spinks Field House	The facility, which features a brick and wrought iron fence, 3,000 permanent seats, fully-automated scoreboard, press box, and lighting for night games, serves as home of Furman's successful men's and women's soccer programs and has been the site of seven Southern Conference Tournaments and three NCAA Tournament first round matches. The 5,300-square foot Spinks Field House includes home and visiting team locker rooms, expanded public restrooms, a permanent concession area, referees' room, and storage space. The second floor features offices for both the men's and women's coaching staffs as well as an area to entertain guests and recruits.
Men's and Women's Tennis	Mickel Tennis Center	Furman University's tennis programs, which over the years have brought great distinction to the university with numerous championships and outstanding play, boast as their home one of the region's top tennis facilities, the Minor Herndon Mickel Tennis Center. The central building of the tennis center, which encloses approximately 41,000 square feet, features four indoor courts and a clubhouse with offices for the men's and women's coaches, locker rooms for home and visiting teams, lobby, lounge, and viewing area for the outdoor courts. The complex also includes an outside stadium court with seating for 400 people and 15 outdoor courts.
Men's and Women's Track and Field	Belk Complex for Track and Field	The track complex boasts the Kelsey-West track, a red MONDO surface with eight 42-inch lanes. The high jump, long jump, triple jump, and pole vault runways are joined by a cream colored apron. MONDO is the premier name in track surfaces and has been used in each of the last eleven Olympics and numerous World Track & Field Championships.
Softball	Pepsi Softball Stadium	Its outfield sodded with Bermuda grass, which provides a consistently smooth playing surface, Pepsi Stadium measures 200 feet down the left and right field foul lines and 220 feet to the center field fence. With seating for 300, the facility boasts enclosed brick dugouts, laser graded infield, bullpens, two batting cages located down the right field

		line, scoreboard, and a padded outfield fence bordered by an attractive hedge. In 2013, Furman added a 2,700-square foot press box facility to Pepsi Stadium. The new two-story building houses a concession stand, storage area and restrooms on the lower level. The second floor includes coaches offices, seating for operations staff and media as well as a lounge area for entertaining guests and recruits. Lights were added to the facility in 2014 giving the Paladins more flexibility in scheduling games and practices.
Volleyball	Alley Gym	The gym floor is painted and sealed in a volleyball specific design. In addition, the facility includes a scoreboard, strobe lighting, and wireless internet hub. Seating for 500 is also provided. Locker rooms are located just off the court, and there are coaches' offices in the building.

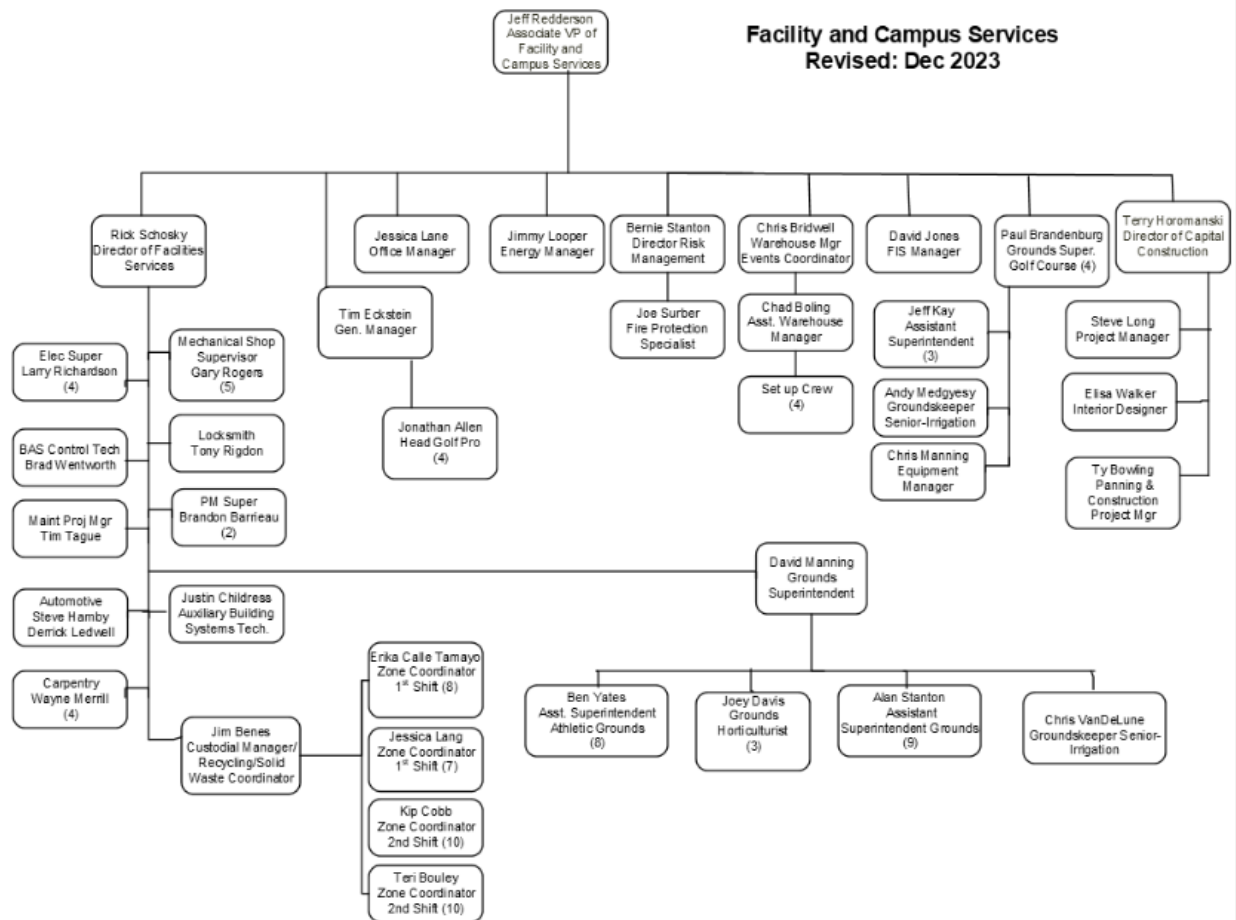
Facilities Services works with both the Athletic Director and the coaches to address their everyday and long term capital improvement needs. Many of the fields are lighted so that practice and competition events can be played outside of normal classroom and lab hours. Lighted fields include Paladin Stadium (Football and Lacrosse), Latham Baseball Stadium (Baseball), Eugene Soccer Stadium (Soccer), Pepsi Softball Stadium (Softball), Soccer Practice Field, and the Upper/Lower North Village Fields. In addition to Division I sports, Furman has a number of Club and Intramural teams that utilize a number of these fields. From the evidence provided above, it is clear that Furman has adequate and appropriate physical resources to support its athletics program.

Management of Physical Resources

The department of Facilities Services, which is part of the Finance & Administration division, is responsible for the physical resource management of the University. Reporting to the Vice President for Finance & Administration, the Associate Vice President for Facility and Campus Services directs a qualified staff who manage the functional areas of Facilities which include Construction, Maintenance, Grounds, Custodial, Event Support, Real Property Management and Risk Management. The Facilities Services team works to ensure that the construction, maintenance, and sustainability of the University facilities result in a high-quality teaching environment for faculty, staff, and students. Resumes of key staff in Facilities Services are provided below:

Title	Name
AVP Facility and Campus Services	Jeff Redderson
Director of Facilities Services	Rick Schosky
Director of Capital Construction	Terry Horomanski
Director of Risk Management	Bernie Stanton
Facilities Information Systems Manager	David Jones
Event Support/Warehouse Manager	Chris Bridwell
Office Manager	Jessica Lane

The organizational chart below depicts how roles and responsibilities are aligned. As with any organization, having qualified, motivated employees is a major key to success, and Furman certainly has those ingredients in its staff.



Facilities Services has the responsibility for the day to day functioning of the University's physical resources. In Spring 2021 Facilities Services migrated to a new work order system, Asset Essentials by Brightly. The University utilizes this software system to assist with the appropriate tracking and accounting of work orders for repair and maintenance of campus facilities and assets. Campus community members can submit work orders individually, or the system can trigger work orders automatically based on a predefined preventative maintenance schedule. Building occupants submit a [work order request](#) through the platform which is then distributed to the appropriate maintenance trade. The system allows for real-time communication to the requester on the progress, completion, and comments regarding the request. Additionally, the system allows for the attachment of pictures and documents for historical records (i.e. invoices, warranty information, etc.) and parts distribution/inventory for billing purposes pertaining to the work order. Asset Essentials offers robust data retrieval, even to a granular level to assess trade shop workload, asset maintenance cost over time, projected longevity of equipment for future replacement. As of

December 2023, more than 25,000 work orders have been requested and dispersed among the trades and departments.

Capital Assets and Physical Inventory

Per [University Policy 371.1 Property Control](#), the Budget Services department is responsible for ensuring that the financial records of the University reflect all changes to physical assets. As such, Furman has a dedicated staff member, the Fixed Asset and Real Property Coordinator (FA Coordinator), whose responsibility is to inventory and account for capitalized fixed assets. Capital assets include land, buildings, building improvements, furniture, equipment, library books, collections, and all other tangible assets used in operations, which per the University's [Capitalization Policy](#) were purchased for at least \$5,000 and with a useful life of at least three years. A [fixed asset inventory](#) is maintained as part of the Workday database. All new capital assets with an initial cost of \$5,000 or more are tagged and/or assigned a unique inventory by the FA Coordinator. A qualifying asset's description, vendor, cost, date of acquisition, location by building and/or department, and any other pertinent information are entered into the Colleague fixed asset system in order to maintain an inventory and to calculate annual depreciation of these assets.

The FA Coordinator performs periodic inventory of the University's capital assets. Inventory lists are provided to the department by the FA Coordinator to verify inventory status. When the inventory is completed, both the department representative and the FA Coordinator sign the completed inventory list. See examples of [three fixed asset inventories](#) for the Trone Student Center that have occurred over the last ten years.

When a capital asset needs to be removed from inventory, a [Fixed Asset Transfer-Disposal Request Form](#) is prepared by the department and approved by the FA Coordinator and the Warehouse Manager, if applicable. Based on the information included on this form, the FA Coordinator disposes of the asset in the fixed asset system.

In addition to its inventory of capital assets, the University also keeps an inventory of IT related equipment, such as computers, iPads, etc., which do not meet the University's capitalization threshold, but the inventory is maintained for tracking purposes (see [ITS inventory procedures document](#)).

Long Term Maintenance/Capital Renewal and Replacements

The Facilities Services staff works closely with the department chairs and building coordinators to identify and plan for longer-term maintenance and capital improvement needs. These needs include minor improvements such as carpet replacements, painting, lighting retrofits, and technology upgrades as well as larger renewal projects such as HVAC replacements and renovations to residence halls and classroom buildings. A Furman Project Manager completes the planning and execution for these larger renewal projects. Having adequate funding for long-term maintenance/capital renewal and replacements is a critical factor in ensuring that the campus facilities are maintained at satisfactory levels.

To operate in a prudent and responsible manner, the University has set the following approval thresholds for capital renewals and replacements:

- **Under \$100,000** - approved by the Associate Vice President for Facilities and Campus Services
- **\$100,000 - \$250,000** – approved by the Vice President for Finance & Administration
- **\$250,000 - \$1,000,000** – approved by the President
- **Greater than \$1,000,000** – approved by the Board of Trustees

In addition, the University has long understood that the addition of a new building results in new annual operating costs and long-term maintenance costs. In 1993, in order for these costs not to be incurred by the operating budget, the BOT approved the [Building Endowment Policy](#) which mandates that additional endowment funds must be raised to support the annual operating and maintenance costs of new buildings or additional square footage. Minutes from the [BOT Ground & Buildings Subcommittee meeting from February 10, 2011 \(p.2\)](#) show the committee approving the renovations and additions to the Student Center once funding thresholds have been met.

Below is a chart that shows the combined funding levels from all sources for the last five years. Available funding was reduced during FY 2021 and FY 2022 due to the Covid pandemic but the university has restored funding to pre-covid amounts which is important to keeping our facilities in conditions at acceptable levels.

Fiscal Year	Funding for Long Term Maintenance
2020	\$5,134,000
2021	\$1,934,000
2022	\$2,937,000
2023	\$4,085,000
2024	\$4,574,358

Benchmarking

Furman has utilized services provided by Sightlines, Inc. since 2017 to benchmark critical facilities related data against peer and aspirant institutions that are similarly sized to Furman; [results from the latest 2022 report](#) are included here. The benchmarking process provides very useful comparisons in the areas of Asset Stewardship, Asset Reinvestment, Operational Effectiveness, and Service. The information helps answer critical questions regarding how well the Campus Facilities are being maintained and whether sufficient resources are being invested into our facilities over time. As you will see from the report, Furman compares quite favorably in most areas but the information obtained is also very helpful in determining where improvements may be needed.

Risk Management

Furman's Risk Management department works diligently to procure [adequate insurance coverage](#) to protect the University's physical assets. Periodic testing of all building sprinkler systems and fire alarms are performed. Additionally, the Travelers Rest, South Carolina, fire department conducts annual fire protection inspections of Furman's buildings. Such an [inspection of the Lakeside Housing Residential Complex](#) occurred in 2023.

The [Director of Risk Management](#) leads Furman's Enterprise Risk Management (ERM) project, which was implemented to enhance the University's ability to achieve its mission, vision, and strategic objectives. Furman's ERM program provides a structured, consistent, and continuous process for the early and proactive identification and reporting of risks and opportunities. The four-step process focuses on potential risks in the areas of strategic, financial, operational, compliance, and reputational risk and involves these factors:

- Identifying potential events that might impair operations
- Assessing the probability of a given event taking place and the likely impact to the campus
- Developing a response to mitigate potential threats
- Controlling and monitoring the process

Departments across campus have developed lists of potential risks to regularly monitor and control. ERM is a continuous process and one that is reviewed with the Trustee Audit Committee on a regular basis (see [Audit Committee minutes from February 17, 2021](#)).

Safety and Security

The University has developed a comprehensive [safety manual](#) that is designed to assist managers, supervisors, and employees establish workplace health and safety programs and to prepare plans of action to prevent accidents or occupational diseases. The manual was written to provide guidance and direction for university environmental, health, and safety programs to include:

- Fire and Life Safety
- Laboratory Safety
- Fleet Safety
- Education and Awareness
- Compliance
- Training
- Inspections

Information in the manual is disseminated to groups across the campus by the Risk Management Department via scheduled training sessions, orientation, supervisor-

employee performance review processes, and departmental meetings (an example of [Fleet Safety Training](#) is linked).

Furman's Police Department is responsible for ensuring the safety and security of all persons and property on our campus. This includes, but is not limited to, crime prevention, traffic and parking control, criminal investigations, and first response to all emergencies that occur on campus. The Furman University Police Department conducts an annual review of the [Security and Fire Report](#) to ensure compliance with the Jeanne Clery Act and to provide information to students, employees, visitors, prospective employees, and prospective students.

Operations and Maintenance

- Facilities utilizes a web-based maintenance work order system (Asset Essentials by Brightly) to communicate and track work that needs to be completed. Attached is an [example of a typical work order request form](#) printed from the system. Building occupants submit a work order to Facilities with any building or service needs they have, and that work is planned and distributed to the appropriate maintenance trade via the work order system. The maintenance department is organized by both the type of work completed and by trade. Corrective and planned maintenance work is completed by our trade shops, which include HVAC, Plumbing, Electrical, Locksmith, Automotive, and Carpentry. Furman also has a Preventive Maintenance (PM) shop that completes maintenance based on time or some other interval data. A total of 25 staff exist in maintenance, but contract labor and third-party contractors are utilized as needed to ensure that service expectations are met or when highly specialized maintenance work (chiller repairs, for example) are required. All work completed by our staff is done via work order so that costs and work histories can be tracked according to specific equipment and buildings. This information is valuable in troubleshooting problems and identifying recurrent problems/trends that should possibly be addressed in a different manner.

Custodial

Furman utilizes both a first and second shift in-house custodial staff to ensure that our campus buildings are sufficiently clean and meet the expectations of the building occupants. During the COVID Pandemic, their department was integral in the sanitation and cleanliness of our university and was a key component to the Furman community returning to in-person work/study as early and safely as possible. A [third-party study](#) was completed on the department in 2014 to ensure that resources were most efficiently utilized and that best practices were being followed regarding the methods and materials used to complete the needed work. Based on that Benchmark Analysis, labor resources were realigned resulting in the reduction of temporary labor by three persons. A total of 36 custodians make up the department, and they provide a great and important service to the University.

Grounds

A total of 25 staff members work in the Grounds department, and they are organized by both the type of work completed and the zone/area of campus that they are responsible for maintaining. The staff is highly specialized and trained in their areas of expertise. Combined with their work ethic and dedication, this is a big part of the reason that Furman is consistently nationally recognized for the beauty of the campus. Below are a few examples of the national and regional recognition that Furman has received for the beauty and maintenance of the campus.

Southern Living

The South's Most Beautiful Colleges

Southern Living Magazine listed Furman as one of the top 40 most beautiful colleges in the South (10/27/2023)

[\(40+ Most Beautiful College Campuses In The South \(southernliving.com\)\)](#).

TRAVEL+ LEISURE

Travel & Leisure Magazine rated Furman as one of the 25 Most Beautiful College Campuses in the U.S. (3/27/2023)

[25 Most Beautiful College Campuses in the U.S. \(travelandleisure.com\)](#)

COSMOPOLITAN

Cosmopolitan Magazine rated Furman as one of the 30 most beautiful college campuses in the world (6/29/21)

[30 of the Most Beautiful College Campuses in the World \(cosmopolitan.com\)](#)

Events/Warehouse

As a residential campus with rigorous academic programs in conjunction with the opportunities afforded under the launching of the Furman Advantage, our campus is bustling with student organizational and departmental events. These events involve distinguished guest speakers or entities such as the South Carolina Supreme Court (October 2023). In addition, our campus and resources are frequently utilized as a venue for national conferences (Bankers Association),

camps (Liberty/Triumph), and weddings to name a few. All of these events require specific setups such as stages, tents, tables, chairs, etc. We have five full-time staff members to support these event set-up and take down needs. In the academic year 2022, this team completed 733 of event setups that occur on/off campus as well as during evening and weekend hours if the event necessitates. This team also oversees our off-campus warehouse (14,672 square feet) and any items stored there such as furniture available to be repurposed at another campus location, or if item has too much wear/tear for campus use, it is auctioned off resulting in revenue to the university. This team also supports campus deliveries as part of the shipping/receiving department, furniture removal during renovations and oversees the campus stockroom of parts/supplies.

Information Technology

Information Technology Services (ITS) is the primary IT services provider for Furman University. ITS is composed of 34 FTE, and is divided into six teams, providing the full spectrum of both foundational and specialized discipline specific IT services, this includes the IT Service Center, Academic Technologies, Information Security, Enterprise Information Systems, Business Intelligence and Enterprise Infrastructure.

Infrastructure

Furman provides users a robust connection to the Internet via 3GB and 5GB connections from two vendors for redundancy. In addition to the main campus network, a separate residential network (Resnet) is provided by Apogee. Technical support in the Resnet may be requested around the clock via email, chat, phone, text, etc. with average response times of 2 minutes or less with total call times of 15 minutes or less. Students may also connect personal computers and mobile devices to the campus network when devices are appropriately registered and meet security requirements of the Fortinet network access control (NAC) system. High speed wireless connectivity is provided throughout the campus including in popular green spaces. Special connectivity needs are accommodated with cloud or remote access technologies such as a virtual private network (VPN), Citrix, or other secure access gateway methods. 201 spaces at Furman are designated as classrooms, conference rooms or meeting rooms, and many are equipped with [specialized technology \(p. 1\)](#). The campus uses the Microsoft 365 suite of tools, among other [widely used software \(p.1\)](#).

Learning Management System

Moodle is the Learning Management System (LMS) adopted by Furman. Furman's Moodle instances are hosted by OpenLMS, assuring consistent attention to updates and rigorous testing of plugins, and connected applications before installation. More than 30 activity and resource types are available in the LMS. Advanced content configuration features such as automatic timing of content availability and a variety of collaboration options make Moodle an attractive platform for course syllabi and assignments, supplemental content, group activities and grading. Quizzes were visited more than eight hundred thousand times in 2023, with Assignments having nearly three hundred thousand visits.

Remote, Distance and Hybrid Learning Resources

With the exception of proprietary systems that require connections to instruments or other local resources, major academic resources are available from any location and generally by using most any internet-connected device. The following major systems are examples of cloud-based and remotely-accessible Furman resources:

- Workday (ERP system) for users
- Furman Website
- Moodle LMS
- Zoom
- Qualtrics
- Microsoft Office 365 – including Outlook, Teams collaboration and OneDrive
- Box file storage
- Network file system (via VPN)
- Adobe Creative Cloud
- Team Dynamix (Service Center request system and technology self-help)
- Academic blogs server (blogs.furman.edu)
- Multiple databases, ebooks and ejournals available through Furman Libraries
- Various academic applications
- Remote Lab software and/or Lab machines (by need)

Both synchronous and asynchronous activities are fully supported with the LMS and Box primarily used to host course content with Zoom typically hosting live presentations and collaboration. Microsoft Teams is sometimes used for live sessions as well. Other remote teaching technology is described [here \(p.2\)](#).

Because of the growing interest in distance learning and remote and hybrid settings, we offer support for video and audio production of recorded presentations with a lightboard room and podcast/recording studio on the lower level of the main library.

Technology Help

Both new and returning students are invited to the Service Center at the start of the fall semester for assistance connecting personal devices to the Furman network. Furman provides a [technology service center \(p.2\)](#) (online at the ITS website) including personalized help desk support, response to self-service requests, equipment loans, technology advice, and instructions and help documentation for technologies in use at Furman. In addition to the Service Center Director, five full-time employees and a cadre of student staff offer assistance beyond the normal business day. Requests are tracked through the Team Dynamix (TDX) ticketing system. In 2023, the [Service Center closed over 12,500 service tickets \(p.3\)](#) for the university community – nearly 3,000 of those for students. Top categories for which assistance was requested from students were General IT Services, Computing & Printing, and Accounts and Passwords.

Furman's commitment to [accessibility](#) standards (p.4) is pervasive throughout enterprise resources and content, as evidenced by requirements for accessibility on Furman's web and instructional content.

Integrating Operation of Facilities with Mission

Our buildings and how they are operated are closely aligned with the mission and strategic plan of the university. New buildings and planned renovations are strategic priorities that are identified in a master planning process. The original campus master plan was completed 1955 when Furman relocated from downtown Greenville to its current location. Updates to the master plan were completed in 2010 and 2019. In addition, how we design, build, and operate our buildings are aligned with our mission of the university. As an example, Furman is highly committed to Sustainability as a strategic priority and we now offer a major in Sustainability Science as a result. To support this university priority, Furman designs and constructs our buildings according to LEED (Leadership in Environmental and Energy Efficient Design) standards. Following these standards results in more sustainable building projects and we now have five (5) building that have been built according to these standards.

Our facilities staff frequently works with students and faculty on initiatives that support the teaching that takes place in the classroom. Our campus is a living, learning laboratory and our faculty use it as part of their teaching and ongoing research. Examples include:

- Building energy metering and use analysis software that is used by Facilities to operate our buildings more efficiently and by our Sustainability Science majors to learn about the various technologies and strategies available in the market place to improve building performance.
- 1 MW solar farm located on 5 acres of land on the northeast corner of campus. This system saves the university \$70,000 per year and brings the campus closer to carbon neutrality which is a university strategic goal.

As a liberal arts institution, Furman's [primary mission](#) is to challenge and support “lifelong learners through rigorous inquiry, transformative experiences, and deep reflection to lead lives of meaning and consequence”. The classrooms, laboratories, and facilities on Furman's campus foster close interaction between faculty and students, collaboration between students, pursuing creative endeavors, and conducting research using the most up-to-date equipment. The extensive and attractive grounds, athletic fields, residences, and other student life buildings promote the vision of “Inspiring purposeful living and fostering thriving communities.”

Summary

Furman demonstrates above that it exercises appropriate control over all its physical resources. Qualified staff are in place in Facilities Services which has primary responsibility for physical resource management at the university. Inventories of fixed assets are maintained, and periodic physical inventories are performed. Appropriate procedures and approvals are in place

to dispose of fixed assets. Longer-term maintenance and capital improvement needs are identified. Funding for deferred maintenance is a priority of the University and has systematically been built into the operating budget over time. Approval threshold levels exist for capital renewals and replacements. Annual operating and maintenance costs of new buildings or additional square footage is funded through additional endowment funds raised. The University manages risk of its physical resources by having adequate insurance coverage, periodic testing of campus sprinkler systems and alarms, development of a safety manual, and development of an Enterprise Risk Management program which is a continuous process for the early and proactive identification and reporting of risks.

In addition, Furman has adequate physical resources to support its mission and the scope of its programs and services. Building data, including square footage and date built/renovated, was provided that ties the building to the mission and demonstrates adequacy. Results of a study by an independent third-party corroborates the adequacy of Furman's academic space supporting the undergraduate education mission ([comparison to national standards](#)). Data provided regarding housing accommodations demonstrate adequacy to support the university's four-year residency requirement, and data provided regarding Furman's athletic facilities demonstrate adequacy to support the school's 16 Division I teams. Evidence that the university engages in periodic updates to its master plan to ensure alignment of physical resources with mission and strategic vision was also provided ([2019 master plan update](#)).